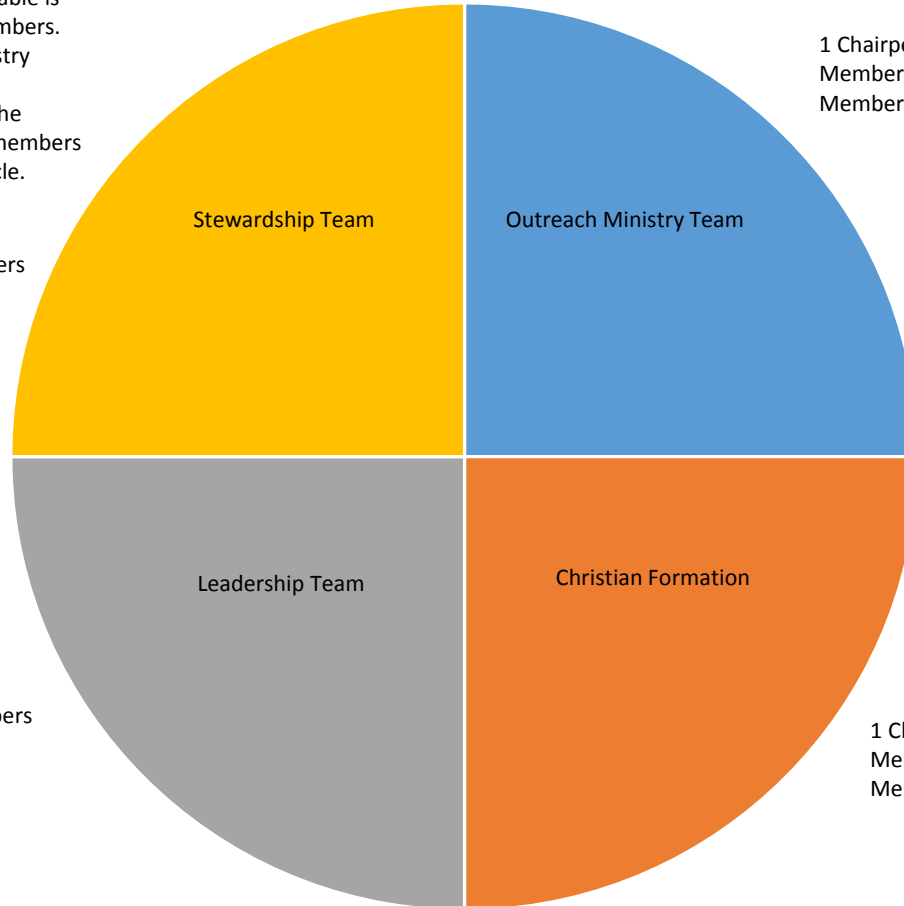


## Connectional Table 2016/2017

Conference Connectional Table is made up of 12 at-large members. They will serve with 4 ministry teams, 3 persons per team. Chairperson will serve for the quadrennium. Other two members will rotate in a two year cycle.

1 Chairperson & 2 members  
Member "A"  
Member "B"



1 Chairperson & 2 members  
Member "A"  
Member "B"

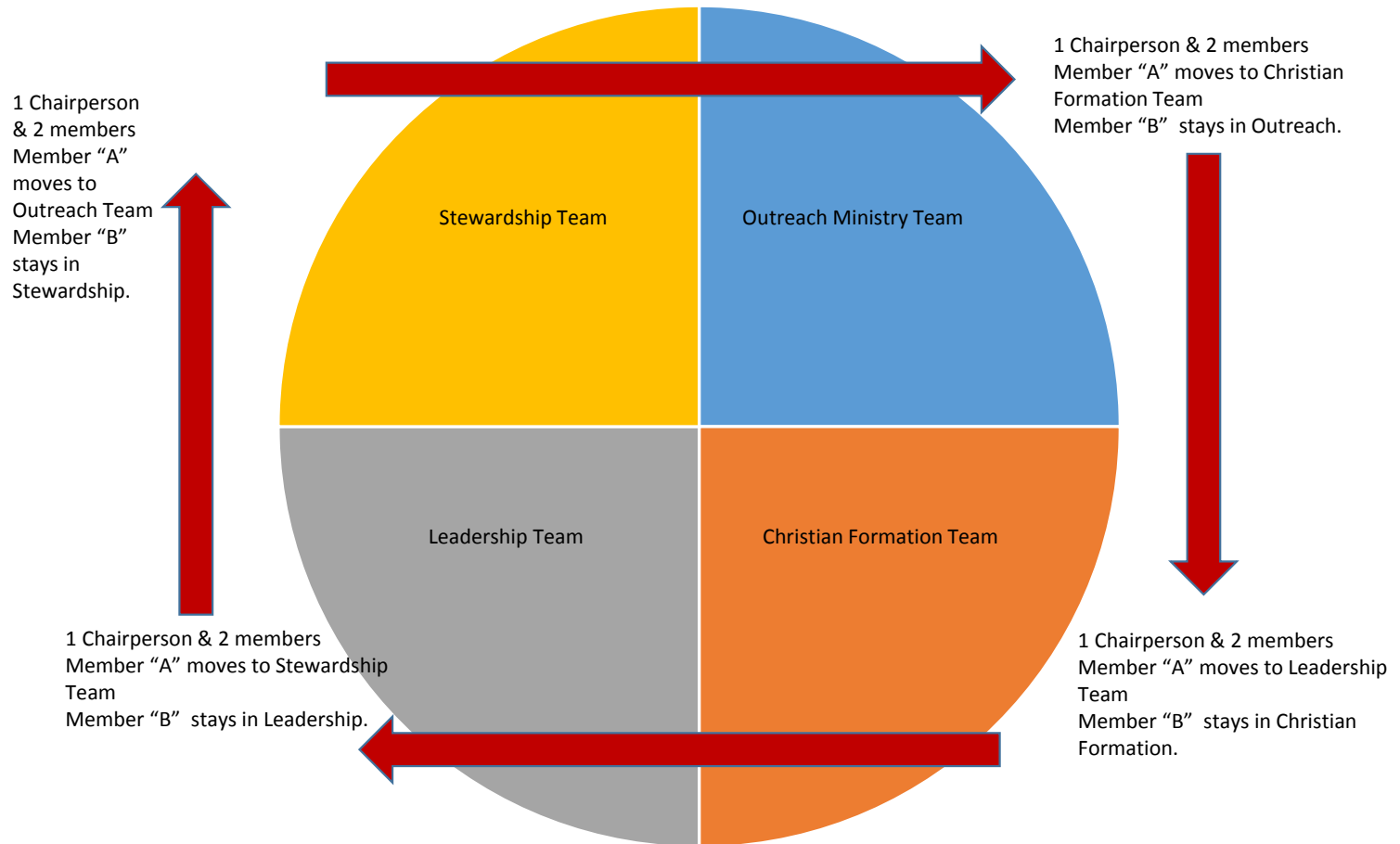
Beginning in year 2, one of the two rotating members ("A") will rotate to a different team. The following year, the second member will rotate ("B"). This ensures that the Connectional Table remains as a membership body and not constituency body. The chairperson of each ministry team will remain in place over the full quadrennium. Thus, one of the 2 rotating members will rotate on a 2 year cycle in staggered years, "A" rotating in year 1, "B" rotating in year 2, "A" rotating in year 3, "B" rotating in year 4, and so on.

The twelve members on the Connectional Table (3 per ministry team), link all the ministry committees to the full Table and to the Cabinet through joint meetings with the Cabinet.

1 Chairperson & 2 members  
Member "A"  
Member "B"

1 Chairperson & 2 members  
Member "A"  
Member "B"

## Connectional Table 2017/2018



## Connectional Table 2018/2019

